

NEW BOOK, CON'D

are viewed as "religious literature" and quickly discarded. Such tracts may be cheap to produce and distribute, but their effectiveness is marginal. With this in mind we are designing a full color, hard back book which will be the cornerstone of our distribution efforts in the future.

There is an overwhelming amount of impressive evidence supporting the biblical model of reality. This model (1) starts with a recent creation as the correct basis for understanding biology and biochemistry, (2) acknowledges a worldwide flood as the foundation for understanding geology, (3) understands that there was a literal fall of man as the correct explanation for the origin of disease/death, (4) shows the need for a redeemer outside of mankind as the solution to man's universal problem with guilt and search for meaning.

The book that we are developing will provide Biblical answers to four basic questions in a way few people have seen. These are the questions faced by every person in every culture: Where did I come from? What's wrong with the world? How can it be fixed? What is my purpose? The visual style of this new book is aimed at grabbing the attention of the current generation.

Each quarterly Search for the Truth newsletter will showcase two of the pages (see center section) in the same size and format as the new book. This month we feature an article on the implications of Mt. St. Helens. The eruption at Mt. St. Helens resulted in a massive flood flow which provides a scientific model for understanding the types of geological forces happening around the planet during the flood of Noah's time. The stark contrast between the total devastation below and the beauty of the mountain above personifies the vast gulf separating our sinful behavior and the holiness of our Creator. This picture serves as a wonderful tool for explaining how the fossil record of our planet rapidly formed, why there are widespread coal seams around the world, how extensive regional bands of horizontal sediment formed, and how quickly huge river valleys can be created by flowing water. Each two-page layout in the new

book will also have a "skeptic's corner". This will explain how the world seeks to discredit the evidence being presented – often by ignoring the obvious or distorting the facts.

ST. HELENS, CON'D

then, as it feeds on underground plant parts, it brings up fertile soil from below the ash, stuffing these long snow tunnels."

The landscape was transformed from a sterile landscape devoid of life to a new ecosystem within years of the eruption. According the Forest Service report, "Plants representing all major stages of forest development appear to be establishing simultaneously. This contradicts classic ecological theory that describes the orderly establishment and successive replacement of one group of plants by another (for example, mosses followed by grasses by shrubs by trees). Classic theory, based upon studies of abandoned fields and formerly glaciated terrain, does not appear to apply at Mount St. Helens. Over the last 17 years scientists have developed some interesting theories about how ecosystems respond to large-scale disturbance." The "classic ecological theory" has been strongly influenced by evolutionary thought which assumes one type of vegetation slowly dominates others. Thus evolution has been a detriment to scientific advancement yet again.

The Bible describes Noah remaining on the ark for almost 2 months after it landed. This would have allowed time for plants to grow and provide for survival. One only has to watch the speed at which weeds spread in newly tilled soil to understand how much resiliency God has built into his creation. The rapid recovery at Mt. St. Helens demonstrates that the recent worldwide flood is not fiction but a realistic account of a true historical event.



SEARCH FOR THE TRUTH
WWW.SEARCHFORTHETRUTH.NET
3275 MONROE RD MIDLAND, MI 48640
(989) 837-5546
TRUTH@SEARCHFORTHETRUTH.NET

FALL FUNDRAISER A SUCCESS

Search for the Truth Ministries became a non-profit ministry capable of accepting tax deductible contributions in 2007. Our vision is to "awaken hearts and minds to Biblical truth" by reaching out with the evidence from the physical world showing that God's Word can be trusted. This is critical because the Bible has been replaced by naturalistic science as our culture's source of truth and reality. Those who oppose Biblical truth have a lock on our educational, media, and museum systems.

We are targeting students and prisoners for distribution of our books. Students because they represent the future and are being strongly deceived, prisoners because they have time to ponder their purpose in life and represent 1 out of every 100 adults in the country. By directly distributing visual, accurate, and interesting materials we can by-pass the censorship which keeps them from hearing the truth and reestablish the link between physical and spiritual reality. Giving biblical creation materials to thousands of students and prisoners is feasible because these groups already have a variety of Christian organizations reaching out to them.

In the fall of 2007 this vision was presented and over \$9000 was contributed! These gifts will be used to distribute 3000 books to prisoners and students throughout 2008. Two thousand books have already been sent to schools and prisons in New York, California, Michigan, Oregon, and Minnesota. The remainder of the books will be given away during outreach campaigns (followed by creation presentations) on college campuses in the fall. Thanks to all who contributed financially to this vision. Small contributions from many Christians will make our goal of distributing over one million books a reality.

VOL. 1 NO. 1 WINTER 2008



SEARCH FOR THE TRUTH

AWAKENING HEARTS AND MINDS TO BIBLICAL TRUTH

IN THIS ISSUE

New Outreach Book Started

Mt. St. Helens Recovery
Amazingly Fast

Mt. St. Helens Print Offered

Creation Newlsetter Begins

Successful Fundraiser - 3000
books to be distributed

SFT BOARD

Dave Johnson

Rob & Beth Kelch

Larry & Jean Langrill

Doug Lee

Bruce & Robin Malone

Scott & Joan Miller

EXECUTIVE DIRECTOR

Bruce Malone

GRAPHIC DESIGNER

Shelley Mordue

INTERCESSOR TEAM

Francine Cheger

Rich & Tina Kleiss

Kent & Sue Larson

Matt & Nancy Place



A BOOK FOR A NEW GENERATION

Our primary goal has always been to reach as many people as possible with the truth of God's Word. Lengthy books filled with page after page of text, no matter how well written, are simply not read by most people. Tract type books, no matter how filled with truth,

con'd on back

MT. ST. HELENS PRINT

We are proud to make available art-quality prints of the picture shown in the centerfold of this newsletter (without the text). Two sizes are available: 12" by 36" or 20" by 60". Included with each print will be our one hour DVD, "Explosive Evidence for Creation", which explains how the denial of a worldwide flood led directly to the concept of biological evolution - with its disastrous effect on the faith of millions. This Mt. St. Helens panorama was taken by Bruce Malone in October of 2007 on a day described by the park ranger as, "The most perfect viewing day in all of 2007".

Consider putting this gorgeous conversation starter in your home or office and watch how it opens opportunities for spiritual discussions. This print immediately grabs the attention of the viewer and naturally leads to a discussion of how the aftermath of a worldwide flood would have resulted in huge regional layered horizontal bands of rock, extensive coal seams, and deep oversized river valleys around the world. This is a stunning tool for changing people's perspective on the believability of the early chapters of Genesis.

Visit www.searchforthetruth.net or call (989) 837-5546 to order. The price is \$10 for the 3-foot print or \$20 for 5-foot print.

ST. HELENS AMAZING RECOVERY

One of the most common objections to the biblical account of Noah's flood is that there has not been enough time for the re-establishment of vegetation to its current state. The remarkably rapid recovery at Mt. St. Helens puts this objection to rest.

In the words of ScienceDaily (Nov. 16, 2005), "When Mount St. Helens erupted in 1980, it destroyed every living thing around it. Gas, ash and rock, heated to over 1000 degrees Fahrenheit, sterilized a 60-kilometer square area, leaving a gray lunar-looking landscape devoid of plants and animals." Trees as far as 17 miles from the volcano were snapped off like match sticks by the blast wave.

Yet the recovery has been more rapid than thought possible following the disaster. According to USFS, 1998, Volcano Review: U.S. Forest Service, Summer/Fall 1998: "Surprisingly, elk were seen on the landslide deposit west of the volcano only weeks after the May 18, 1980, eruption. In recent years, as more plant life emerges, these large relatives of deer move throughout the blast zone, feeding in the valleys in winter and moving to the higher slopes in the spring and summer. As they climb steep slopes, their hooves erode the volcanic debris, uncovering soil and speeding the return of plants." The same report shows how small animals such as gophers are returning, "Though you may never see one of these palm-size mammals, they are abundant throughout much of the blast area. Gophers leave evidence of their winter's work as the snow melts and reveals long earth cores atop the ash. You may be surprised to find these cores are solid upon close inspection. The pocket gopher forms tunnels in the deep snow,

con'd on back

THE SIGNIFICANCE OF MT. ST. HELENS

For almost 200 years modern geological thought has been ruled by the axiom that “the present is the key to the past”. In other words, the slow gradual processes of today indicate that huge periods of time have been required to produce the grandiose canyons, extensive coal seams, massive sedimentary rock formations, and enormous fossil beds of our planet. The explosion and accompanying flood flow at Mt. St. Helens provides a small scale model showing that the Bible (which presents the worldwide flood as a reality of history) gives a far better explanation for most of the Earth’s geological features.



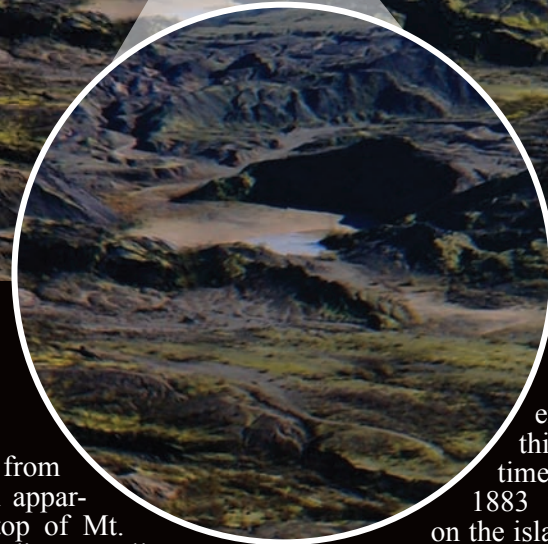
SKEPTIC’S CORNER

What is the skeptic’s response to this actual physical model of rapid coal formation, layered sedimentation, and river valley formation? They say the model is invalid because the flood flow at Mt. St. Helens was too localized to explain huge regional sedimentary rock layers found around the world. Although the flood flow from Mt. St. Helens was not “continent-wide” in extent, it does explain the characteristics of regional rock layers, such as seen in the Grand Canyon strata or coal seams. This clearly supports a much larger flood, worldwide in extent, as the cause of these larger formations. They also claim the river valley erosion happened while the sediment was still soft, so it does not explain the rapid formation of larger river valleys such as the Grand Canyon. Yet the sediment formed by the Mt. St. Helens flow had hardened into many distinct layers with a rock-like consistency long before the water breached and carved a 600 foot deep canyon in the North Fork of the Toutle River. The eruption of Mt. St. Helens clearly illustrates how a worldwide flood explains the geology of our planet.



RAPID FORMATION OF COAL BEDS

The standard explanation for the worldwide distribution of coal seams is that millions of years ago there were swamps covering the earth. However, swamp sediments are NOT layered in appearance yet coal seams are. After the eruption at Mt. St. Helens, a million uprooted trees were left floating on Spirit Lake. Over the next several years much of this vegetation mat sank, resulting in organic rich LAYERED sediment on the bottom of Spirit Lake -dozens of feet in thickness. All that would be required to turn this into a layered coal seam would be rapid burial under high pressures and temperature, i.e. another volcanic event. A worldwide flood would have uprooted vegetation across the entire globe - resulting in widespread, layered coal seams. This is exactly what we find around the planet.



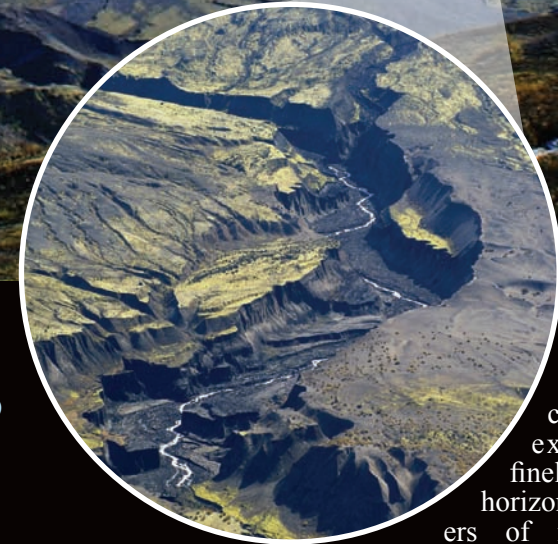
WORLD WIDE DEVASTATION

Look at the devastation from this single eruption, still apparent 28 years after the top of Mt. St. Helens slid into the adjacent valley. During the worldwide flood the Bible states that, “...all the fountains of the great deep broke up...” (Genesis 7:11) This likely involved thousand of massive volcanic events. The entire earth would have been left looking like this scene in the aftermath of the earth re-shaping catastrophe of almost 5000 years ago. No wonder Noah remained on the ark for months after it grounded on the Mount of Ararat. Yet in geologic significance, what happened at Mt. St Helens was a miniscule event. Although the force of the eruption was greater than that of dropping

an atomic bomb on Hiroshima every second for days; this eruption was 20 times smaller than the 1883 volcanic eruption on the island of Krakatoa in the South Pacific. The Krakatoa eruption caused the summer temperatures in Europe to be lower than the normal winter temperatures and lowered the average temperature on our entire planet for the next five years! The devastation portrayed in this panorama provides a picture of the anger our righteous God feels toward sin. Yet, just as God provided a path of escape for Noah and his family on the Ark, God has provided a way for us to escape His holy wrath – through the sacrifice of Jesus Christ as payment for our guilt.

SORTED HORIZONTAL SEDIMENT AND RAPID FORMATION OF NEW RIVER VALLEYS

When Mt. St. Helens erupted in March of 1980 the top third of the mountain was instantly fluidized by the tremendous force and heat of the trapped gases. Four billion cubic yards of material flowed at speeds estimated at 150 mph into the valley, laying down sediment up to 600 feet deep. Over the next several months rainwater backed up until it broke through the recently hardened rock layers to create completely new river valleys - not forming by erosion over millions of years - but transforming the landscape within hours. To the amazement of scientists, this catastrophically formed strata (especially in newly formed North Fork



Toutle River canyon), exhibiting finely sorted horizontal layers of materials.

These horizontal rock layers did not develop over huge time periods but formed from sediments which rapidly flowed into place. The same sort of regional horizontal layers of sedimentary rock, which can be seen around the world, are simply the result of a much larger flood on a worldwide scale.